



# BROAD SQUARE NEWSLETTER

15<sup>th</sup> May 2026

## Attendance Overall: 93.4%

EYFS Winner: RD - 94%  
KS1 Winner: 1H - 94.3%  
LKS2 Winner: 4E - 97.3%  
UKS2 Winner: Year 6 - 99.3%

## Dates for the Diary:

**Term ends for children:** Thursday 21<sup>st</sup> May  
at normal time.

**Friday 22<sup>nd</sup> May** is an INSET day

**Half term:** 25<sup>th</sup> - 29<sup>th</sup> May

**INSET DAY:** Monday 1<sup>st</sup> June

**Children return to school:** Tuesday 2<sup>nd</sup>  
June

### **Year 4: Maths multiplication checks:**

Tuesday 2<sup>nd</sup> June - 12<sup>th</sup> June

**Year 1 phonics Screen week:** Monday 8<sup>th</sup>  
June - 12<sup>th</sup> June

### **Year 6 residential to Barnstondale:**

Wednesday 17<sup>th</sup> June - Friday 19<sup>th</sup> June

Dear parents and carers,

Just a short newsletter this week. It has been a very busy week with our year 6 children completing their SATs.

Our pupils have been absolutely amazing!! We could not be more proud of our children and how hard they have worked this week and in the lead up to sitting their SATS. They have enjoyed a fun day in the park today to relax and have some fun.

Last week our nursery and reception children enjoyed their visit to Knowsley Safari Park, staff tell me how wonderfully behaved the children were whilst having a great day out.

The dates for the diary explain important assessments coming up. Also details about finishing for half term next Thursday at normal time.

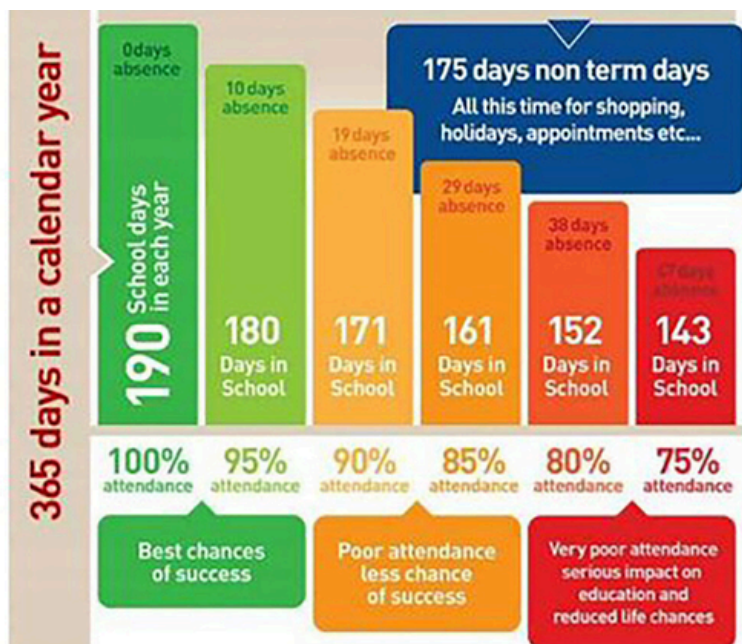
We still have limited nursery places for September available if you would like to call the office for details.

Thank you for your continued support.

*Mrs Foden*, Headteacher

# Attendance Matters:

This week we have made reference to an image that is on our school website. This highlights the importance of good attendance and punctuality.



**DID YOU KNOW?** A two week holiday in term time means that the highest attendance you can achieve is **94.7%**



**DID YOU KNOW?** If you are 15 minutes late each day you will have missed a full 2 weeks of school in one year?

W.C. 11.05.26

Picture News

Talk about why you believe this story became news across the UK this week.

If you were to enter, what type of song would you choose? Why?

How can music make people feel more connected?

On what occasions might you play music? What effect does it have?

<http://www.youtube.com/watch?v=Yh1kg5CB5pQ>

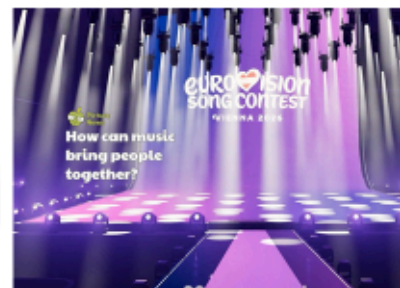
Let's look at this week's story

This week, countries from across Europe and beyond are taking part in the Eurovision Song Contest. Each country performs a song, and millions of people watch and vote for their favourites. The contest celebrates different styles of music, languages, and cultures from around the world.



**UN Rights of the Child**

Every child has the right to relax, play, and join in with fun activities like music and art. The Eurovision Song Contest lets children celebrate this right by sharing songs and dancing.



How can music bring people together?

**British Values**  
I Really Do Matter!



Which British values do you think this week's story highlights?

I can see **Democracy** because everyone can use their right to vote to help decide the winner of the contest.

The contest celebrates lots of cultures and traditions showing **Mutual Respect and Tolerance**.

Do you agree with either person, or think something different?

**Protected Characteristics**



Which protected characteristic do you think this week's story highlights?

The Eurovision Song Contest celebrates the protected characteristic of **Race**, because it brings people together from many different countries, cultures, and backgrounds to share their music.

Share your thoughts. Do you agree?

