



Look at Y1's learning adventure this term....



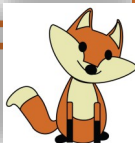
In Mathematics...

We will explore numbers within 10. We will work on adding and subtracting using lots of different ways. Using equipment in class will help us to deepen our understanding. We will also develop our sense of numbers daily. We will recognise, name and sort 2D and 3D shapes.



In Science...

We will study common animals and be introduced to animal groups. We will also explore seasonal change.

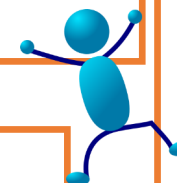


In Music...

Children use their bodies and instruments to listen and respond to pieces of classical music that represent animals. They learn and perform a song as a class and compose a short section of music as a group, with a focus on dynamics and tempo.

In P.E...

Through a theme of and Space and Jungle the children will develop dynamic balance and a seated balance



Safety Messages...

Using scissors safely.
Pants rule
Bonfire Night safety

In Phonics...

Learning to read is important to us. Through our engaging Monster Phonics scheme children will learn and practice sounds every day.



In Geography...

Looking at our local area, explore the location of our home, school, city and country using map work.

Extra-Curricular

Clubs

Technology Club.

In English...

We are reading 'Rapunzel'. We will practise forming our letters and write exciting sentences about the book. We will then write our very own traditional tale story.. We will then write instructions Along with this we will read and spell daily.

Art/Design Technology

We are going to study the work of Paul Curtis. And create a mural using painting skills.



In Jigsaw/PSHE...

We will learn how to make friends and know that we are all unique and differences are celebrated.

In Computing...

Creating media -
Digital painting
Exploring animation with voice recording

In R.E...

Through the theme of Christianity we will look at what Christians believe.

Special events

Norris Green Park trip -12th Nov
KS1 Christmas performance on 11th December.

Outdoor learning

PSHE - planting bulbs
Trip to Croxteth Park farm and grotto. 16th Dec

How can you help at home?

Along with supporting homework, share some quality time talking together daily, like going for a walk or enjoy a hobby or interest, Bedtime stories are a beautiful way to end the day!